

# SHINE

## AD AGENCY

[www.shineadagency.com](http://www.shineadagency.com)

# ABOUT US

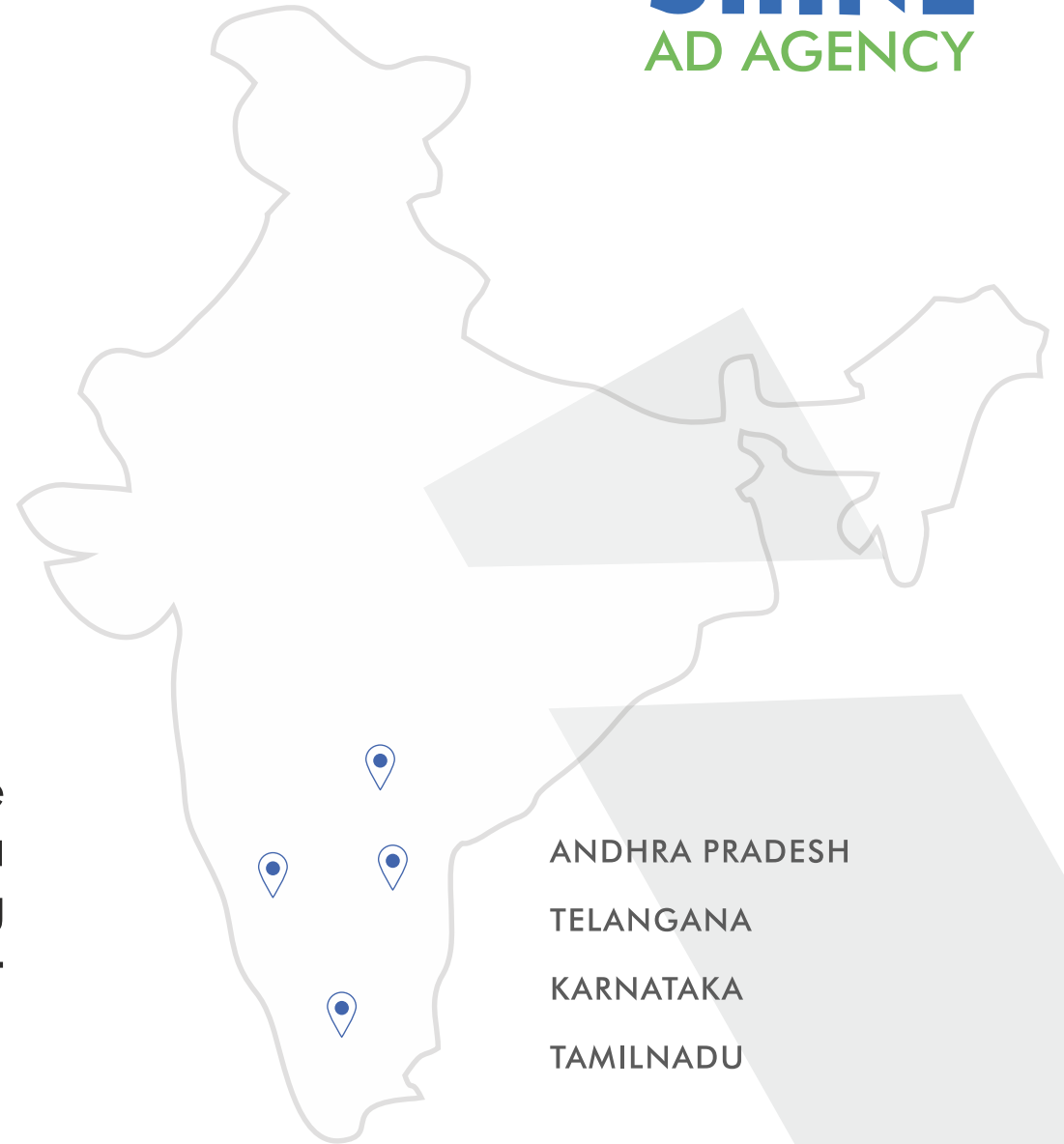
**SHINE** is one among the renowned and well-respected advertising and marketing agencies in the twin Telugu states. Our company's expertise lies in polishing your Brand till it SHINE's!

## **YES...**

We can help communicate the idea of what your brand stands for, an identity that is easy to understand and best reflects your brand promise, with your customers

# OPERATING PLACES

Starting our journey with just 1 Service in 2016, SHINE has blossomed into a complete Advertising and Marketing juggernaut providing more than **200+** comprehensive Services



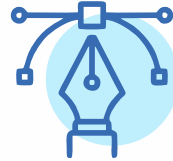
# SHINE

## CAPABILITIES

**SHINE**  
AD AGENCY



Photography



Creative Designing



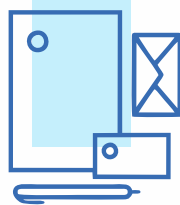
Printing



News Paper



Try Cycle



Branding



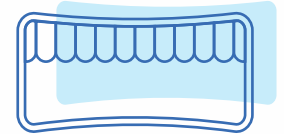
Content Creation



Digital Marketing



TV Ads



Theater Ads



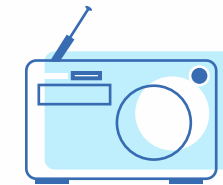
Promotions



Advertising



Corporate Events



Radio Ads



Indoor Branding





# BRAND IDENTITY

1

Naming a  
Company

2

Creative  
Advertisements

3

Logo  
Designing

4

Packaging  
Designs

5

Brouchers

6

Product  
Catalog

7

Environmental  
Designs

8

OOH  
(Out of Home)



# CREATIVE DESIGN

## Video Editing Services

**SHINE**  
AD AGENCY

1

Motion  
Graphic Ads

2

2D Animation  
Ads

3

3D Animation  
Ads

4

Concept Ads

5

Store Walk  
Throughs

6

White Board  
Animation



# BRAND IDENTITY

**SHINE**  
AD AGENCY

## Logo Designing

Dermatologist



Events Co.,

Odoroki

Fast Food

Fast Food



Restaurants





# BRAND IDENTITY

**SHINE**  
AD AGENCY

## Creative Advertisements for paper ads

ప్రఖ్యాతిగాంచిన మల్టీనేషనల్ (MNC) కంపెనీలలో 2019-20లో  
అనంతలక్ష్మి ఇంజనీరింగ్ కాలేజ్ ప్రభంజనం

COUNSELLING CODE: **ALTS**

**429**  
PLACEMENTS  
25 COMPANIES

**Anantha Lakshmi**  
INSTITUTE OF TECHNOLOGY & SCIENCES  
Near S.K.U., ITIKALAPALLI (V), ANANTHAPURAMU

ECE | CSE | EEE | CIVIL | Mech. | MBA. | M.Tech. (ECE, CSE, EEE, Civil)

Dial 96760 23906, 95335 13999, 94922 88869

College Results Advt.

INSIGHTFUL  
LEARNING.

IMPACTFUL  
FUTURE.


Promising doors to the  
future are now open with

  
ManoharbaiPatel Public School  
Insightful Learning. Impactful Future.

Call +91 01234 56789

School Promotion Poster

Better Tomorrows  
Start tonight

  
• MATTRESSES •

You can realize all this when you achieve a  
GOOD SLEEP which brings the FRESHNESS  
into your life to boost your productivity, hard  
work and your trusted partner.

Plot No. 61, Road No. 12, Banjara Hills.

World Class Technology | Decades of Experience | Aspirations

Mattress



# BRAND IDENTITY

## Packaging Designs





# BRAND IDENTITY

## OOH (Out of Home)



ప్రఖ్యాతిగాంచిన మల్టీనేషనల్ (MNC)  
కంపెనీలలో 2019-20 లో  
అనంతలక్ష్మి విద్యార్థుల  
ఉద్యోగ ప్రభంజనం

**429** Placements | **25** Companies  
COUNSELING CODE **ALTS**

**Anantha Lakshmi**  
INSTITUTE OF TECHNOLOGY & SCIENCES

ECE | CSE | EEE | CIVIL | Mech. | MBA. | M.Tech. (ECE, CSE, EEE, Civil)

Near S.K.U., ITIKALAPALLI (V), ANANTHAPURAMU.  
Dial 96760 23906 | 95335 13999 | 94922 88869

Cognizant | TATA | Mindtree | CGI | wipro | Infosys | Airtel | X | Legato







# BRAND IDENTITY

## Paper Ads

**ARE YOU A HANGRY MONSTER?**  
ORDER FOOD FROM  
**YUMZY**

GET UPTO **50%** OFF WITH SEARCH CARD UPTO RS. 500/- ON EVERY ORDER & **5% CASHBACK** DIRECTLY TO YOUR BANK ACCOUNT.

**YUMZY**  
THE FOOD DELIVERY APP



DOWNLOAD NOW



**rapido**  
Bike Taxi

**FLAT FARES**  
**₹19**  
upto 3km



DOWNLOAD APP ON  
Google Play | App Store

**MUSSOORIE INTERNATIONAL SCHOOL**  
Ranked amongst the Best 3 All Girls Residential Schools in India

**A home away from home..**

Meet us in **VIZAG**  
17th June | Hotel Daspalla  
Time: 3 PM to 6 PM

Class I - XII | Class XI & XII | Class IX - XII

  **UNIVERSITY OF CAMBRIDGE**  
International Examinations

[www.misindia.net](http://www.misindia.net)  
director.admissions@misindia.org  
+91-99855 52223

Established in 2009



**RDS**  
RDS TechServ PVT Ltd  
RDS@techserv.com

**Services :**  
Architecture  
Structural Designing  
Civil Engineering  
Interior Designing  
Construction

**SERVICES OFFER FOR :**  
APARTMENTS | VILLAS | RESIDENTIAL | OFFICE BUILDINGS | HOTELS | RESORTS



Contact information : +91 9989091980, 2891-2555888



# BRAND IDENTITY

**SHINE**  
AD AGENCY

## Environmental Designs







# BRANDING

**SHINE**  
AD AGENCY

LED Boards





# BRANDING

**SHINE**  
AD AGENCY

Arches  
(Box,  
Normal)





# BRANDING

Instore  
Branding







**SHINE**  
AD AGENCY

# BRANDING

Drop  
Downs





**SHiNE**  
AD AGENCY

# BRANDING

Mini  
Hording





# PROMOTIONS

**SHINE**  
AD AGENCY

- ♦ Pamphlet Distribution
- ♦ Pole Banners
- ♦ Auto Stickering
- ♦ Auto Booming
- ♦ Traffic Baragates
- ♦ Pamphlet Insertion
- ♦ Milk Packet Distribution
- ♦ App Installation Acitivites
- ♦ Brand Awareness Activities
- ♦ Product Sampling
- ♦ Bike Rallies
- ♦ Rural Campaigns
- ♦ Mall Activations
- ♦ College Activations
- ♦ Appartment & Colony Acitivations
- ♦ Apartment Posters Placements
- ♦ Door to Door Activities
- ♦ No Parking Boards
- ♦ Look Walkers
- ♦ Mobile Vans
- ♦ Tricycles
- ♦ Canopy Activities
- ♦ Flash Mobs
- ♦ Umbrella Activities
- ♦ Balloon Advertising
- ♦ Non Retail Boards
- ♦ Screens at Apartments
- ♦ Digital Screens in City
- ♦ Promotional Activity - Data Collection
- ♦ Car Branding
- ♦ PR Activity
- ♦ Influencer & Celebrity Management
- ♦ Event Promotions - Standees and Frames



# PROMOTIONS

Pamphlet  
Dristibution







# PROMOTIONS

**SHINE**  
AD AGENCY

## Pole Banners







# PROMOTIONS

**SHINE**  
AD AGENCY

Auto  
Stickering &  
Auto Top's





# PROMOTIONS

**SHINE**  
AD AGENCY

**Auto  
Booming  
with Voice**





# PROMOTIONS

**SHINE**  
AD AGENCY

## Traffic Barricade







# PROMOTIONS

**SHINE**  
AD AGENCY

Pamphlet  
Insertion





# PROMOTIONS

**SHINE**  
AD AGENCY

**Pamphlets in  
Milk Packets**





# PROMOTIONS

**SHINE**  
AD AGENCY

**App  
Installation  
Activates**







# PROMOTIONS

**SHINE**  
AD AGENCY

## Brand Awareness Activity





# PROMOTIONS

**SHINE**  
AD AGENCY

## Product Sampling







# PROMOTIONS

**SHINE**  
AD AGENCY

## Bike Rallies





# PROMOTIONS

**SHINE**  
AD AGENCY

## Rural Campaigns







# PROMOTIONS

**SHINE**  
AD AGENCY

## Mall Activities





# PROMOTIONS

**SHINE**  
AD AGENCY

## College Activations





# PROMOTIONS

**SHINE**  
AD AGENCY

Apartment  
&  
Society  
Activities

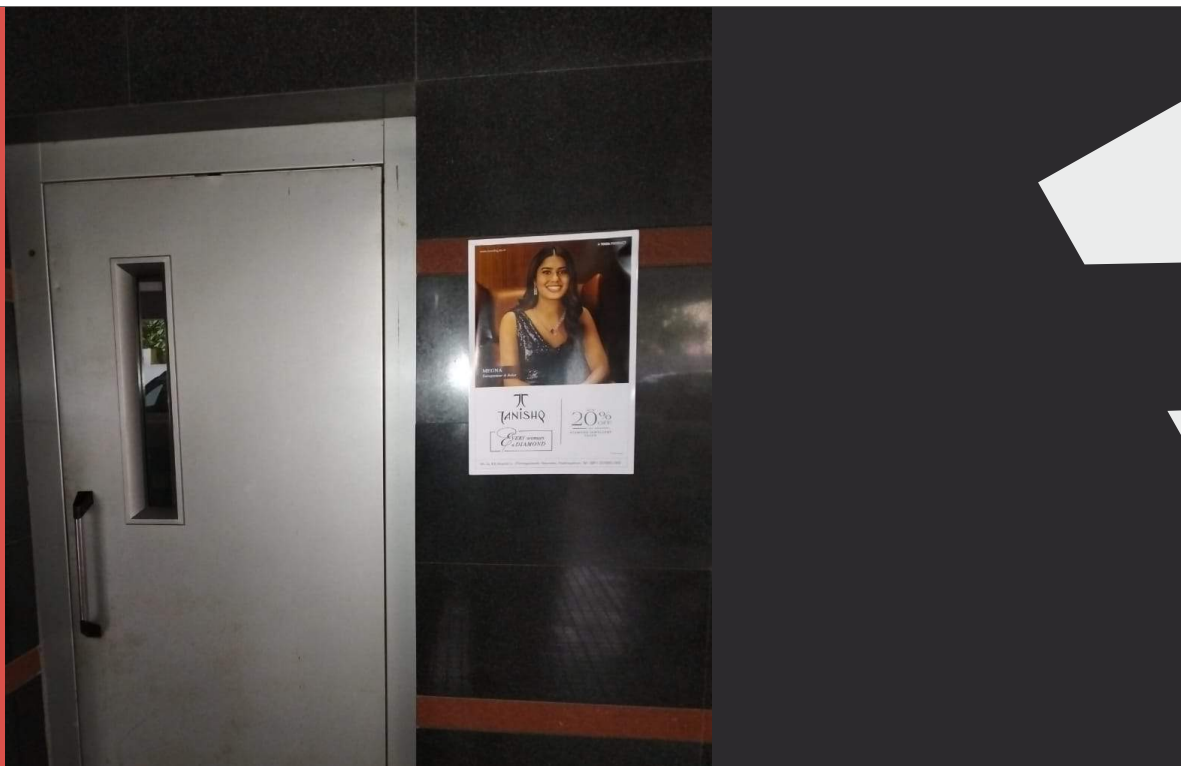




# PROMOTIONS

**SHINE**  
AD AGENCY

**Apartment  
Posters  
Placements**







# PROMOTIONS

**SHINE**  
AD AGENCY

Door to  
Door  
Activities





# PROMOTIONS

**SHINE**  
AD AGENCY

**No Parking  
Boards**







# PROMOTIONS

**SHINE**  
AD AGENCY

Look  
Walkers





# PROMOTIONS

**SHINE**  
AD AGENCY

## Mobile Vans





# PROMOTIONS

**SHINE**  
AD AGENCY

## Tricycle Ads







# PROMOTIONS

**SHINE**  
AD AGENCY

## Canopy Activities







# PROMOTIONS

**SHINE**  
AD AGENCY

Flash  
Mobs





# PROMOTIONS

**SHINE**  
AD AGENCY

## Umbrella Promotions





# PROMOTIONS

**SHINE**  
AD AGENCY

## Balloon Advertising





# PROMOTIONS

**SHINE**  
AD AGENCY

**Non - Retail  
Boards**







# PROMOTIONS

**SHINE**  
AD AGENCY

Screens at  
Apartments





# PROMOTIONS

**SHINE**  
AD AGENCY

Digital  
Screens  
in City





# PROMOTIONS

**SHINE**  
AD AGENCY

LED Mobile  
Van





# PROMOTIONS

**SHINE**  
AD AGENCY

Car  
Branding







# PROMOTIONS

**SHINE**  
AD AGENCY

PR Activity





# PROMOTIONS

**SHINE**  
AD AGENCY

Apartment &  
Society  
Activations





# PROMOTIONS

**SHINE**  
AD AGENCY

## Event Promotions - Standeers and Frames







# ADVERTISING

**SHINE**  
AD AGENCY

**We are one of the leading Media Buying  
and Selling Company**

- ✓ "OOH (Out of Home)  
| | Hoardings, Bus Shelters & Bus  
Branding, Advertisement on  
Trains, Buses, Cabs, Uni Poles,  
Central Medians, Flyover  
Panels, Pole Kiosks, LED  
Screens"
- ✓ FM Radio's
- ✓ Paper Ads
- ✓ Magazine Ads
- ✓ TV Ads (Satellite & Local)
- ✓ Theater Ads (Multiplex and Single Theatres)
- ✓ Sponsor Ships for Audio Functions, Web  
Series, Programs in TVC
- ✓ Airline Ads





# ADVERTISING

**SHINE**  
AD AGENCY

OOH  
(Out of Home)



Train Inside



Metro Train Branding



# ADVERTISING

**SHINE**  
AD AGENCY

OOH  
(Out of Home)



Bus Branding



# ADVERTISING

**SHINE**  
AD AGENCY

OOH  
(Out of Home)



Bus Shelter



# ADVERTISING

**SHINE**  
AD AGENCY

OOH  
(Out of Home)



Hording





# ADVERTISING

**SHINE**  
AD AGENCY

## Paper Ads

ಈನಾಡು

ಆಂಧ್ರಜ್ಯೋತಿ

ಸಾಕ್ಷಿ

  
THE TIMES OF INDIA

DECCAN  
Chronicle

  
THE HINDU

- ✓ Classifieds
- ✓ Display Ads
- ✓ Articles & Story Coverage
- ✓ Obituary Ads
- ✓ Real Estate Ads
- ✓ Interviews



# ADVERTISING

**SHINE**  
AD AGENCY

## TV Ads ( Satellite & Local )

### Entertainment Channel's



### New's Channel's



### Spiritual Channel's



### Cartoon Channel's



- ✓ TVC Slots
- ✓ Scrolling's
- ✓ Banner Ads
- ✓ Show Sponsorships
- ✓ Live Show's & Interviews



# ADVERTISING

**SHINE**  
AD AGENCY

## FM Radio's



- ✓ Audio Jingle's
- ✓ RJ Mention's
- ✓ Slot Purchase and Sale
- ✓ Show Sponsor's
- ✓ Live Show's
- ✓ People Engage Activities



# ADVERTISING

**SHINE**  
AD AGENCY

## Theater Ads (Multiplex and Single Theatres)

Standalone Theatre's



Multiplex Theatre's  
(Online & Offline)



✓ On Screen Ads

✓ Off-Screen Ads





# ADVERTISING

**SHINE**  
AD AGENCY

## Magazine Ads



- ✓ Brand Story Coverage
- ✓ Special Articles
- ✓ Events Coverage
- ✓ Full Page Advertisements



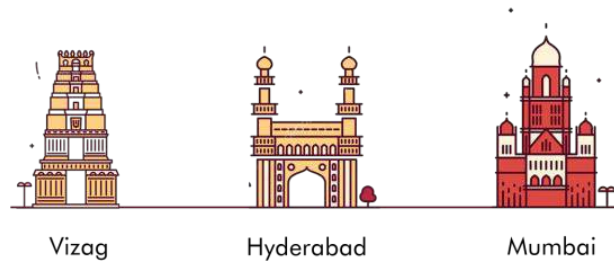
# ADVERTISING

**SHINE**  
AD AGENCY

AirLines:



AirPorts:



- ✓ Meal Tray Branding
- ✓ Boarding Passes
- ✓ In Flight Magazines
- ✓ Conveyer Belt Media
- ✓ Digital Screens
- ✓ Paper Distribution with Flyer



## Meet-Up's & Launches

**SHINE**  
AD AGENCY

### Store Inaugurations



Client Name: Pantaloon  
Location: Vijayawada



# ADVERTISING

**SHINE**  
AD AGENCY

## Sponsor Ships



- ✓ Audio Functions
- ✓ Live Shows
- ✓ Award Ceremonies
- ✓ Private Interviews
- ✓ Web-Series
- ✓ Brand Related Content





## Meet-Up's & Launches

☆ Store  
Inaugurations

☆ Product  
Launches

☆ Expo's &  
Exhibition's

☆ Dealer &  
Customer Meet's

☆ Celebrity & Influencer's  
Management through Offline  
and Video's also



# Meet-Up's & Launches

## Celebrity & Influencers Management



Shine Tied up with  
**50+ Celebrities**  
**100+ Artists**  
**150+ Influencers**



# Meet-Up's & Launches

## Dealer & Customer Meets







## Meet-Up's & Launches

**SHINE**  
AD AGENCY

### Product Launches



Client Name: CRI Pumps  
Location: Visakhapatnam





# Meet-Up's & Launches

**SHINE**  
AD AGENCY

## Expos & Exhibitions



Stall Setup for the Brands in  
Expo's and Exhibitions  
Well Planned Expos is our  
Specialization  
We Worked with  
CREDAI Property EXPO  
SBI Property EXPO

# Our Clients

**SHINE**  
AD AGENCY



# Our Clients

**SHINE**  
AD AGENCY



# Our Clients

**SHINE**  
AD AGENCY





# Our Clients

**SHINE**  
AD AGENCY



My company has had vast experience in all these segments, and we are still a baby of 6 Years, with miles to go! We can do much more than what the brands expect us to do.

I believe that the strategy that works for one brand or business cannot work for another, even if they belong to the same industry, without some amount of personalization. And, my company does exactly that by tweaking things by coming up with a strategy that suits your brand or business to the T! Feel free to make a one-to-one with me anytime for your Business Development.

I'm here to shine your  
business with my  
**SHINE AD AGENCY**



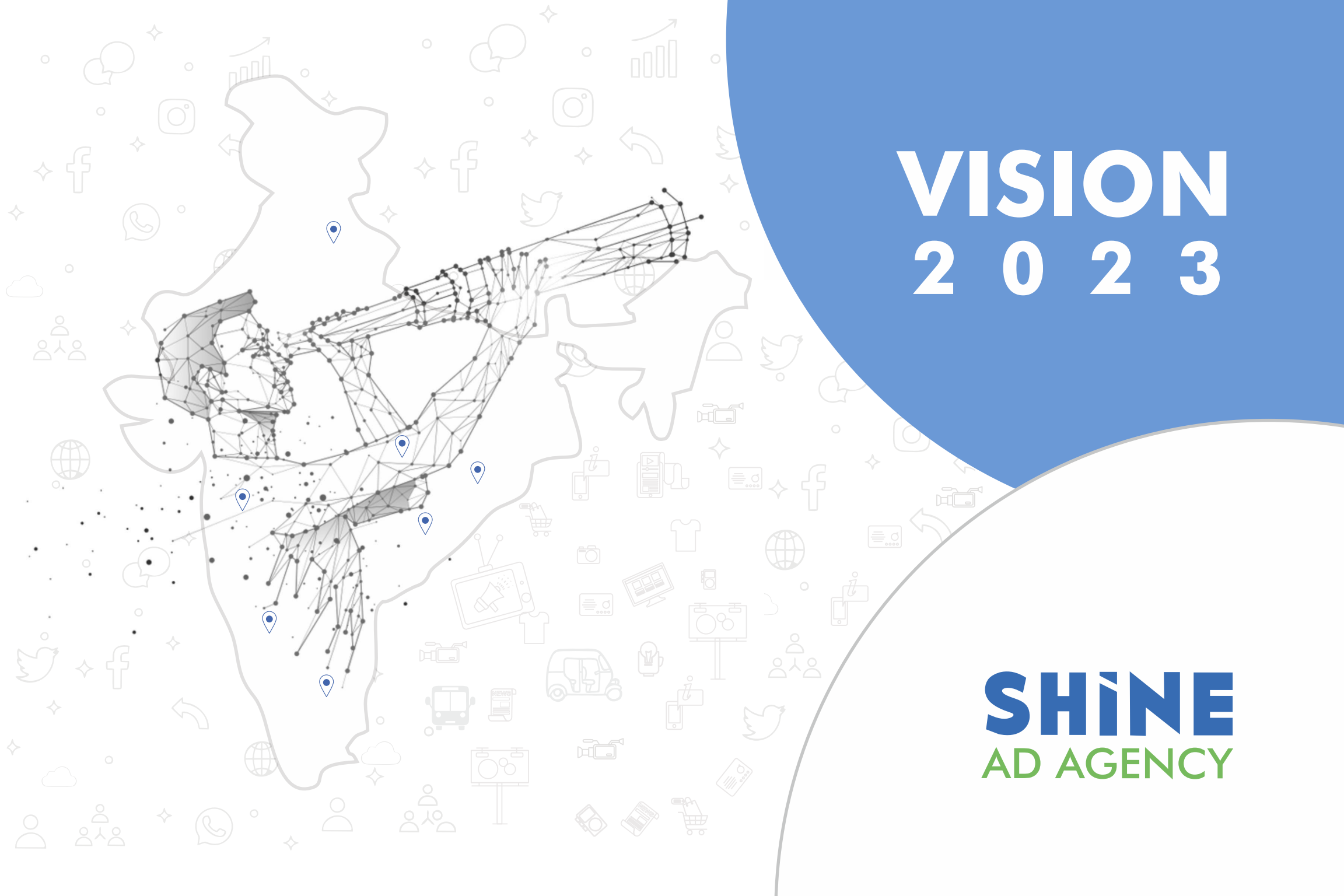
Association with Shine Ads n Events since Two and half years had been wonderful. Mr. Somesh Aditya was been our preferred option to discuss and plan for new marketing initiatives, and execute them flawlessly. Expecting to strengthen our relationship in coming years.

**Leela Dinesh**  
Marketing manager



# VISION 2023

**SHINE**  
AD AGENCY



# THANK YOU



————— CONTACT: —————  
**+91 9160 988 988**

**SHINE**  
**AD AGENCY**

[www.shineadagency.com](http://www.shineadagency.com)

